

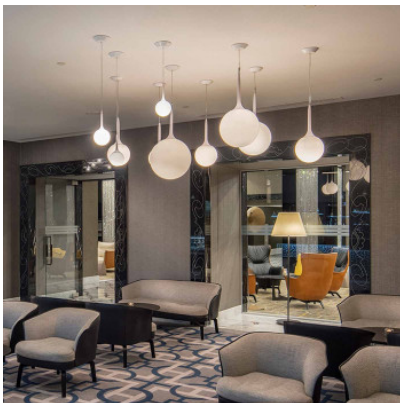


Artemide Castore Suspension

Suspension Castore by Artemide with diffuser of blown glass and stem and ceiling rose of thermoplastic resin. Diffuse light. Dimmable.

ø 14cm	207,00 €-MSRP-230,00-€
MPN	1045110A
EAN	8052993060389
ø 25cm	369,00 €-MSRP-410,00-€
MPN	1053010A
EAN	8052993007018
ø 35cm	454,00 €-MSRP-505,00-€
MPN	1052010A
EAN	8052993006943
ø 42cm	518,00 €-MSRP-575,00-€
MPN	1051010A
EAN	8052993006882

Bulbs	Castore 14: 1 x max. 4W E14 LED lamp. Castore 25: 1 x max. 100W halogen lamp or 1 x 15W fluorescent lamp E27. Castore 35: 1 x max. 150W halogen lamp E27 or 1 x 23W fluorescent lamp E27. Castore 42: 1 x max. 150W halogen lamp E27 or 1 x 23W fluorescent lamp E27.
Dimensions	Castore 14: shade diameter 14 cm, total height min. 35 cm, max 200 cm, canopy diameter 15 cm. Castore 25: shade diameter 25 cm, total height min. 72 cm, max 220 cm, canopy diameter 15 cm. Castore 35: shade diameter 35 cm, total height min. 83 cm, max 233 cm, canopy diameter 15 cm. Castore 42: shade diameter 42 cm, total height min. 99 cm, max 249 cm, canopy diameter 15 cm.



17.05.2024 18:43:35

All prices shown include 19% VAT for deliveries to Deutschland excluding possible shipping costs.



Lumen Lighting Nostraforma GmbH & Co KG
 Bodenseestr. 129 | DE-81243 München
 FON: +49 (0) 89 820 80 62 0 | FAX: +49 (0) 89 820 80 62 200
 MAIL: nostraforma@nostraforma.com | WEB: www.nostraforma.com
 BANK: Stadtparkasse München | BLZ: 701 500 00 | KTO: 907 228 290
 IBAN: DE 85 7015 0000 0907 2282 90 | BIC: SSKMDEMM

UST-ID: DE 813 992 226
 Registergericht München HRA 88136
 Persönlich haftende Gesellschafter
 Nostraforma Verwaltungs GmbH
 Registergericht München HRA 175844
 Geschäftsführer: Cerchi Alexander, Cerchi Patrick, Cerchi Manuel